

# What is a Multi-Tiered System of Support?

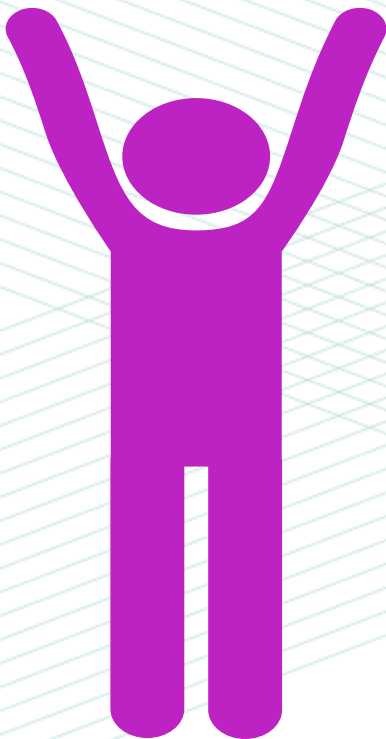
**MTSS**



MTSS is a FRAMEWORK for continuous improvement to meet all students where they need support.

**It is not a model,  
curriculum or program.**

## Implementation requires...



- Leadership
- A paradigm shift in how district, schools, and classrooms function
- Systems adapt to meet student needs based off data collection
- Union-management collaboration for successful implementation
- A change in some job responsibilities and systems
- A culture of continuous improvement and growth
- Buy-in at all levels of the educational ecosystem- minimum 80% school site staff (per school)

# Progress Monitoring

Screenings should be used to identify Tier 2 & 3 student needs

Diagnostic - pre-learning  
Formative- during learning  
Summative- after learning

# Differentiation

CONTENT- change in material being learned  
PROCESS- change in the way students access material  
PRODUCT- way in which student show what they have learned  
FLEXIBLE GROUPING- way in which we group students to meet a need

# Universal Design

the "what" of learning  
the "how" of learning  
the "why" of learning

# Data Collection

Used to promote continuous improvement at the district, site, and classroom levels. Data is collected from assessments and screenings and other sources of data.

Adapted from the California Department of Education  
MTSS Modules, 2016

# PLAN-DO-CHECK-ACT

COLLECT DATA



THIS TELLS US WHAT STUDENTS NEED



Progress Monitoring procedures



ACADEMIC BEHAVIOR

Universal Design for Learning  
Differentiation

Restorative Justice  
Trauma Informed Classrooms  
Positive Behavioral Interventions  
Social-Emotional Learning  
Mindfulness

# a Multi-Tiered System

5%  
STUDENTS

HAVE NOT RESPONDED TO TIER 1 AND 2  
Individualized services  
Strategic LCAP Plan can support this

**FEW**

---

PROGRESS MONITORING  
DATA COLLECTION  
TARGETED INTERVENTIONS  
GENERAL ED SETTING  
COULD LAST 1-4 WEEKS

15%  
STUDENTS

**SOME**

---

UNIVERSAL SCREENINGS FOR ACADEMICS AND BEHAVIOR  
UNIVERSAL DESIGN FOR LEARNING IN EVERY CLASSROOM.

SOCIAL-EMOTIONAL LEARNING  
GENERAL ED SETTING  
CALIFORNIA STATE STANDARDS

**ALL**

DATA COLLECTION  
PROGRESS MONITORING

